



CQD16NRVF/CQD16NRV/CQD16RVF
CQD16RV/CQD20RVF/CQD20RV
Electric Sit-down Reach Truck 1.6/2.0t

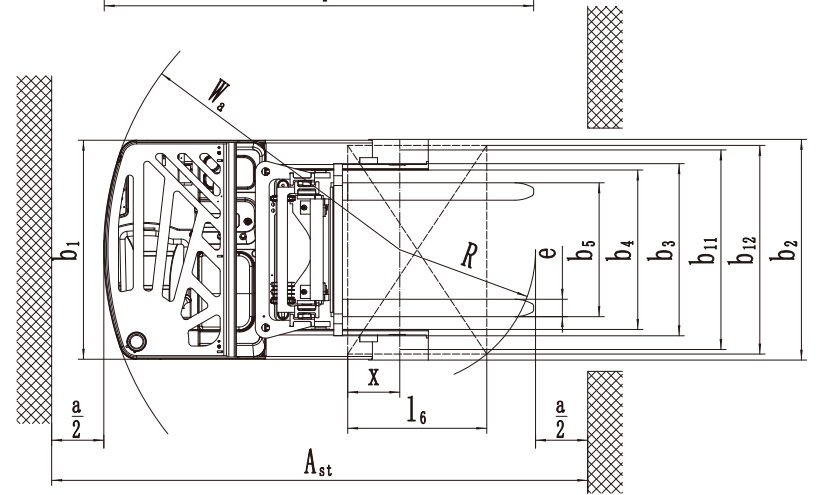
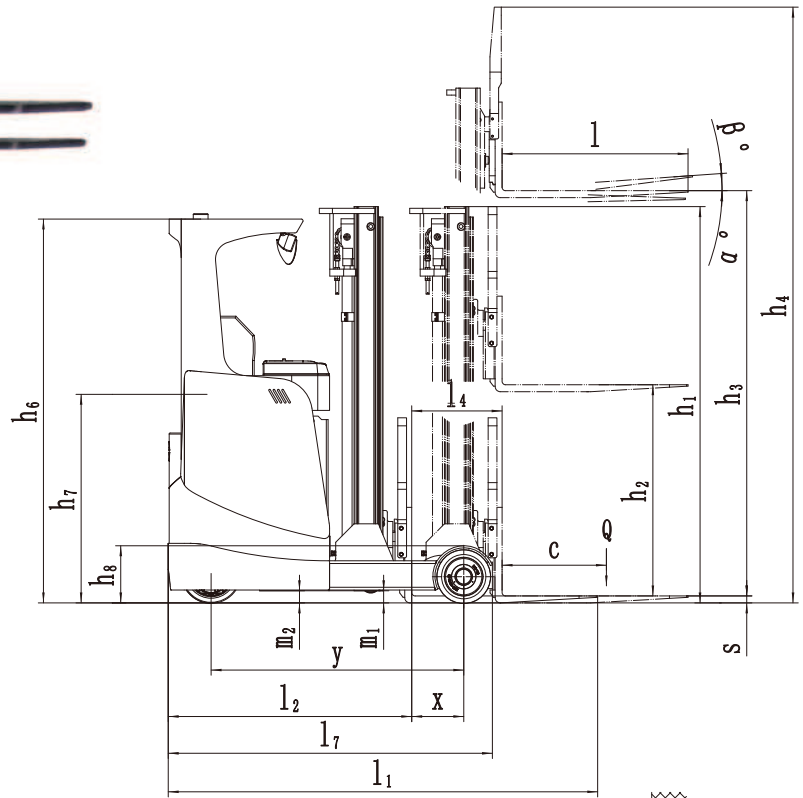
- Up to 11M Stacking Height Makes It Possible to Carry Out Order Picking at High Position with Great Intensity;
- International Quality Components;
- Ergonomics Design, Comfortable and Efficient

Electric Reach Truck 1.6t

CQD16NRVF/CQD16NRV/CQD16RVF CQD16RV/CQD20RVF/CQD20RV

Distinguishing mark						
1.1	Manufacturer	EP				
1.2	Model designation	CQD16NRVF	CQD16NRV	CQD16RVF	CQD16RV	CQD20RVF CQD20RV
1.3	Drive unit	Battery				
1.4	Operator type	Seated				
1.5	rated capacity	Q	t	1.6		2
1.6	Load center distance	c	mm	600		
1.9	Wheelbase	y	mm	1454	1454 ^①	1524 ^①
Weight						
2.1	Service weight (include battery)	kg		3070 ^②	2940 ^②	2945 ^②
2.2	Axle loading, fork advanced, unladen driving side/loading side	kg		1700/1310		
2.3	Axle loading, fork retracted, unladen driving side/loading side	kg		1990/1020		
2.4	Axle loading, fork advanced, laden driving side/loading side	kg		820/3820		
2.5	Axle loading, fork retracted, laden driving side/loading side	kg		1640/3000		
Types,Chassis						
3.1	Tyre type driving wheels/loading wheels	Polyurethane				
3.2	Tyre size, driving wheels (diameter×width)	mm		343×140		
3.3	Tyre size, loading wheels (diameter×width)	mm		310×96	310×118 ^③	
3.4	Tyre size, caster wheels (diameter×width)	mm		/	/ ^④	
3.5	Wheels, number driving, caster/loading (x=drive wheels)			1x, 2	1x, 2 ^⑤	
3.6	Track width, front,driving wheels	b ₁₀	mm	0	0	
3.7	Track width,rear,loading wheels	b ₁₁	mm	1106	1148 ^③	
Dimensions						
4.1	Tilt of mast/fork carriage forward/backward	α/β	°	2/4		
4.2	Height, mast lowered	h ₁	mm	2130 ^③		
4.3	Free lift (load backrest)	h ₂	mm	120 ^③		
4.4	Lift height	h ₃	mm	3000 ^③		
4.5	Height, mast extended	h ₄	mm	4065 ^③		
4.7	Height of overhead guard (cabin)	h ₆	mm	2210		
4.8	Seat height/standing height	h ₇	mm	1200		
4.10	Height of wheel arms	h ₈ (mm)	mm	330		
4.19	Overall length (minimum)	l ₁	mm	2502 ^①	2470 ^①	
4.20	Length to face of forks	l ₂	mm	1432 ^①	1400 ^①	
4.21	Overall width	b ₁ /b ₂	mm	1192/1202	1260/1270 ^③	
4.22	Fork dimensions	s/ e/ l	mm	40×100×1070		40×120×1070
4.23	Fork carriage class/type A, B	mm		A		
4.24	Fork carriage width	b ₃	mm	990		
4.25	Distance between fork-arms	b ₅	mm	200/770	240/740	
4.26	Distance between wheel arms/loading surfaces	b ₄	mm	899	915	
4.28	Reach distance	l ₄	mm	475 ^①	520 ^①	
4.31	Ground clearance, laden, below mast	m ₁	mm	70		
4.32	Ground clearance, center of wheelbase	m ₂	mm	70 ^⑥		
4.34.1	Aisle width for pallets 1000 × 1200 crossways	Ast	mm	2850 ^①	2827 ^①	2842 ^①
4.34.2	Aisle width for pallets 800 × 1200 lengthways	Ast	mm	2918 ^①	2891 ^①	2893 ^①
4.35	turning radius	Wa	mm	1705	1705 ^①	1770 ^①
4.37	Length across wheel arms (exclusive fork)	l ₇	mm	1865	1865 ^①	1935 ^①
Performance data						
5.1	Travel speed, laden/ unladen	km/ h		10/11		9/9.5
5.2	Lifting speed, laden/ unladen	m/ s		0.34/0.45		0.28/0.42
5.3	Lowering speed, laden/ unladen	m/ s		0.31/0.33		0.3/0.33
5.4	Reaching speed, laden / unladen	m/ s		0.9/0.9		
5.8	Max. gradeability, laden/unladen	%		10/15		
5.10	Service brake type	Electromagnetic				
	Park brake type				Electromagnetic	
Electric-engine						
6.1	Drive motor rating S2 60 min	kW		6.4		
6.2	Lift motor rating at S3 15%	kW		11	11	13
6.3	The maximum allowed size battery	mm		1120×387×778	1220×355×778	1220×427×778
6.4	Battery voltage/nominal capacity K5	V/ Ah		48/500 ^④		
6.5	Battery weight	kg		820 ^④	925 ^④	925 ^④
Addition data						
8.1	Type of drive unit	AC				
10.5	Steering type	Electronic				
10.7	Sound pressure level at the driver's ear	dB (A)		75		

1. ①、②、③、④、⑤、⑥ in the parameters is optional configuration, Please see the corresponding schedule ;
 2. ④ in the CQD20 parameters,When mast lifting height h₃≥10m, tyre size of loading wheels for Φ310×208mm, loading wheels track width for 1238mm, Overall width for 1260/1450mm, center of wheelbase at ground clearance for 20mm .
 3. ⑤ in the CQD16 parameters, with two caster wheels and size for Φ102×51mm When mast lifting height h₃≥8m ;
 ⑥ in the CQD20 parameters, with two caster wheels and size for Φ102×51mm When mast lifting height h₃<10m .



with side shift Mast style Lift height(h ₃) Battery capacity	CQD16N			CQD16			CQD20			
	2-stage mast h ₃ < 7m	3-stage mast h ₃ ≤ 7.5m	3-stage mast h ₃ ≤ 9.5m	2-stage mast h ₃ < 7m	3-stage mast h ₃ ≤ 7.5m	3-stage mast h ₃ ≤ 9.5m	2-stage mast h ₃ < 7m	3-stage mast h ₃ ≤ 11m	3-stage mast h ₃ < 7m	
Wheelbase	Y	1454	1454	1454	1524	1524	1524	1594	1524	
Overall length (minimum)	I ₁	2502	2528	2498	2503	2503	2472	2507	2542	
Length to face of forks	I ₂	1432	1458	1428	1433	1433	1402	1437	1472	
Reach distance	I ₄	475	450	495	555	560	585	625	515	
Aisle width for pallets 1000 × 1200 crossways	Ast	2850	2870	2847	2864	2860	2842	2884	2913	
Aisle width for pallets 800 × 1200 lengthways	Ast	2918	2941	2891	2921	2917	2893	2928	2980	
Aisle width for pallets 1000 × 1200 lengthways	Ast	2961	2984	2958	2967	2963	2941	2981	2991	
Aisle width for pallets 800 × 1200 crossways	Ast	2705	2723	2686	2703	2728	2709	2760	2769	
Turning radius	W _a	1705								
Length across wheel arms (exclusive fork)	I ₇	1865								

② Service weight (include battery) Mast height (mm)	CQD16N		CQD16		CQD20	
	2-stage mast	3-stage mast	2-stage mast	3-stage mast	2-stage mast	3-stage mast
3000	3070	2940	2945	3270	3240	3245
3300	3100	2970	2975	3320	3290	3295
3640	3130	3000	3005	3370	3340	3345
4000	3160	3030	3035	3420	3390	3395
4300	3190	3060	3065	3470	3440	3445
4520	3220	3090	3095	3520	3490	3495
5000	3250	3120	3125	-	3540	3545
5480	3280	3150	3155	-	3590	3595
6000	3310	3180	3185	-	3870	3875
4050	3270	3240	3245	-	3925	3930
4500	3320	3290	3295	-	3980	3985
5000	3370	3340	3345	-	4035	4040
5500	3420	3390	3395	-	4070	4075
6000	3470	3440	3445	-	4120	4125
6500	3520	3490	3495	-	4170	4175
7000	-	3540	3545	-	4220	4225
8000	-	3590	3595	-	4270	4275
8500	-	3870	3875	-	4320	4325
9000	-	3980	3985	-	4370	4375
9500	-	4035	4040	-	4420	4425
10000	-	-	4570	-	4470	4475
10500	-	-	4630	-	4520	4525
11000	-	-	4690	-	4570	4575

③ Mast CQD16N 2-stage mast	Lowered mast height		Free lift		Extended mast height	
	Lift height h ₃	h ₁	h ₂	h ₄	h ₄ (*)	h ₄ (*)
2700	1980	120	120	3765	3280	3280
3000	2130	120	120	4065	3580	3580
3300	2280	120	120	4365	3880	3880
3640	2450	120	120	4705	4220	4220
4000	2630	120	120	5065	4580	4580
4300	2780	120	120	5365	4880	4880
4520	2960	160	160	5585	5140	5140
5000	3200	160	160	6065	5620	5620
5480	3460	160	160	6545	6120	6120
6000	3720	160	160	7065	6640	6640
note: (*) for without backrest						

CQD16-20 2-stage mast	Lowered mast height		Free lift		Extended mast height	
	Lift height h ₃	h ₁	h ₂	h ₄	h ₄ (*)	h ₄ (*)
2700	1980	120	120	3765	3280	3280
3000	2130	120	120	4065	3580	3580
3300	2280	120	120	4365	3880	3880
3640	2450	120	120	4705	4220	4220
4000	2630	120	120	5065	4580	4580
4300	2780	120	120	5365	4880	4880
4520	2960	160	160	5585	5140	5140
5000	3200	160	160	6065	5620	5620
5480	3460	160	160	6545	6120	6120
6000	3720	160	160	7065	6640	6640
note: (*) for without backrest						

CQD16-20 3-stage mast (≤7500mm)	Lowered mast height		Free lift		Extended mast height	
	Lift height h ₃	h ₁	h ₂	h ₄	h ₄ (*)	h ₄ (*)
4050	1980	915	1350	5115	4680	4680
4500	2130	1065	1500	5565	5130	5130
5000	2280	1215	1700	6065	5580	5580
5500	2450	1385	1860	6565	6090	6090
6000	2630	1565	2000	7065	6630	6630
6500	2780	1715	2200	7565	7080	7080
7000	3050	1985	2440	8065	7610	7610
7500	3220	2155	2640	8565	8120	8120
note: (*) for without backrest						

CQD20 3-stage mast (≥10000mm)	Lowered mast height		Free lift		Extended mast height	
	Lift height h ₃	h ₁	h ₂	h ₄	h ₄ (*)	h ₄ (*)
10000	4160	3095	3560	11065	10585	10585
10500	4330	3265	3740	11565	11090	11090
11000	4490	3425	3875	12065	11590	11590
note: (*) for without backrest						

1. The parameters in the table are of the standard model. For more information please contact us.

2. The parameters are subject to change without notice.

④ Battery

CQD16N		CQD16			CQD20					
Capacity (Ah)	3HPzS 400	4HPzS 500	4HPzS 600	3HPzS 400	4HPzS 500	4HPzS 600	4HPzS 500	4HPzS 600	4HPzS 700	5HPzS 750
Battery weight (kg)	745	820	900	745	925	935	925	935	1115	1140

options	CQD16RVF	CQD16NRVF	CQD16RV	CQD16NRV	CQD20RVF	CQD20RV
High capacity battery	○ 400/600/700/750Ah	○ 400/600Ah	○ 400/600/700/750Ah	○ 400/600Ah	○ 400/600/700/750Ah	○ 400/600/700/750Ah
lateral battery change	●	●	●	●	●	●
Cold storage (Apply to -20°C)	●	●	●	●	●	●
Beeper	●	●	●	●	●	●
Height indicator	○	○	○	○	○	○
Camera	●	●	●	●	●	●
Fire extinguisher	●	●	●	●	●	●
Front wheel side guard plate	●	●	●	●	●	●
Special modification for Drive-in Racking	●	●	●	●	●	●
OPS system	●	●	●	●	●	●
Water auto-filling system	●	●	●	●	●	●
● options	○ Standard					

1. The parameters in the table are the standard model, for more information please contact us.
 2. The parameters are subject to change without notice.

RATED CAPACITIES GRAPH

